

**Professionals  
in water!**

Solutions and systems within the  
potable water, waste water and  
process water industry.

RWB differentiates itself by supplying  
standard systems on the one hand  
and by developing custom made  
solutions on the other hand. By  
keeping all disciplines, like  
engineering, process management,

assembly, commissioning and  
maintenance in-house and also  
because of a 24/7 service, RWB  
can offer a complete package in  
water treatment. That is our added  
value!

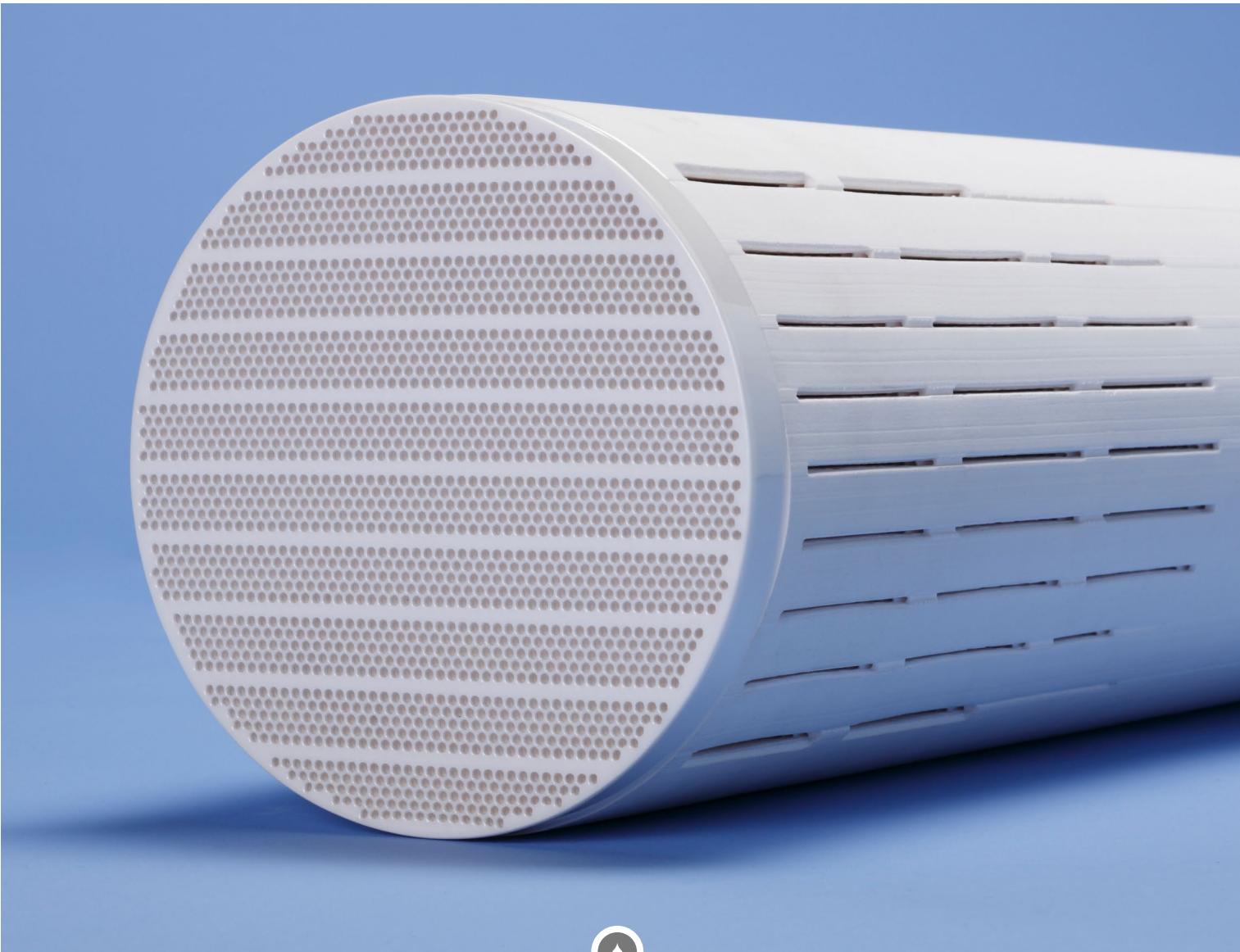
**RWB's services**

- Process technology
- Engineering
- System realization
- Service



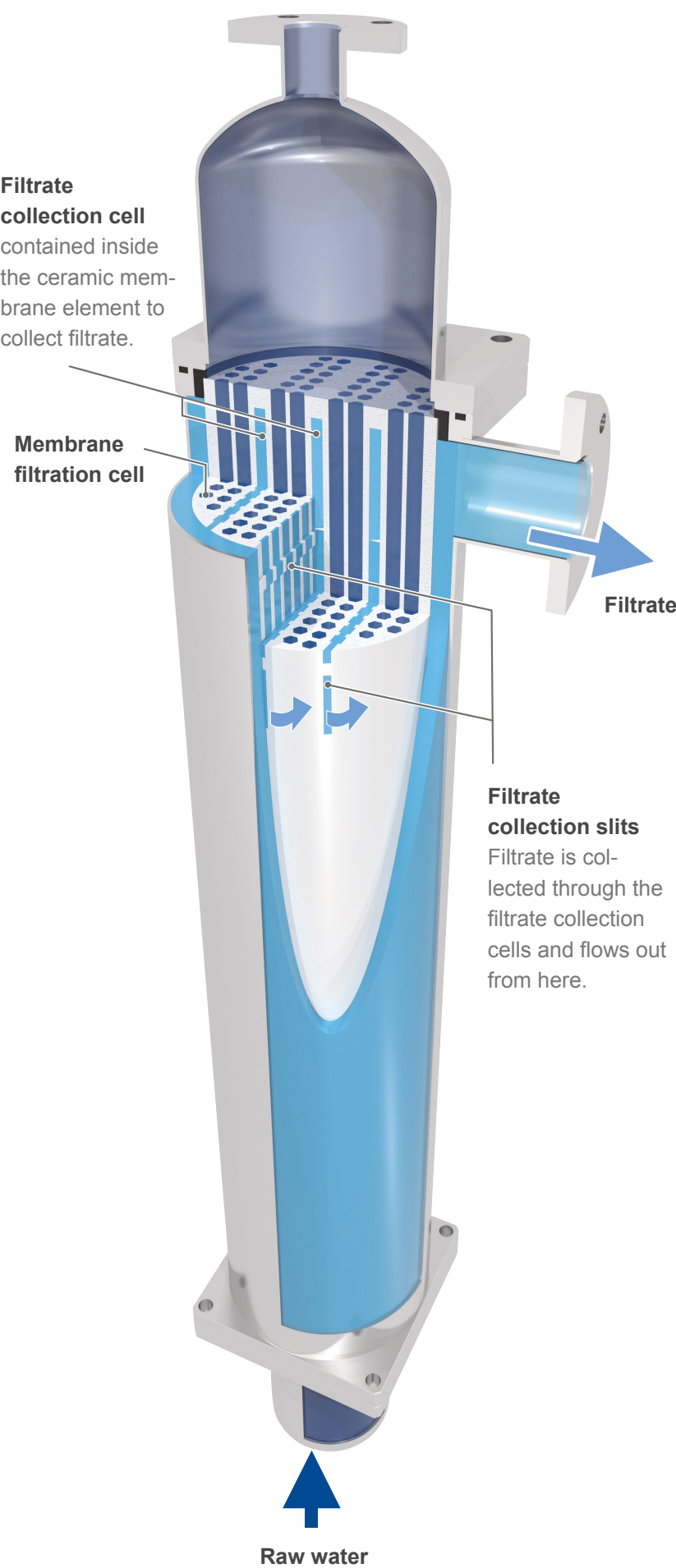
# CERAMIC MEMBRANE FILTRATION SYSTEM

The ceramic membrane filtration system  
promises safe water

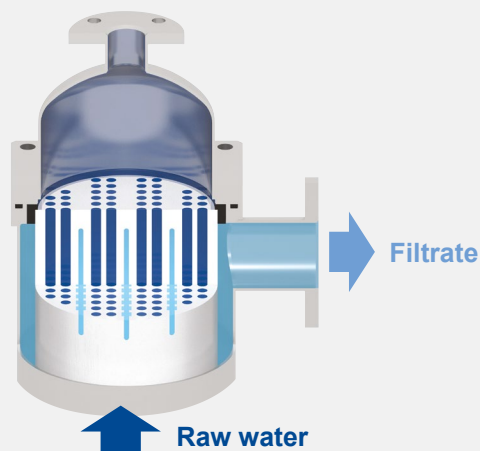




# FILTRATION MECHANISM

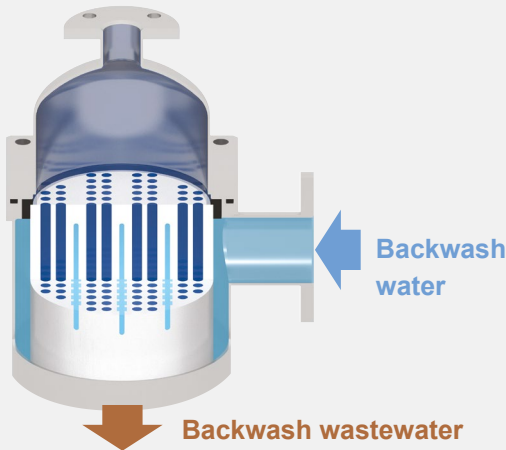


## FILTRATION PROCESS



## BACKWASH PROCESS

Contaminants separation  
High-pressured backwash water detaches the contaminants at 500kPa (5bar, 72psi)



## AIRFLASH

Compressed air discharges the contaminants at 200kPa (2bar, 29 psi)



# FEATURE OF THE CERAMIC MEMBRANE ELEMENT

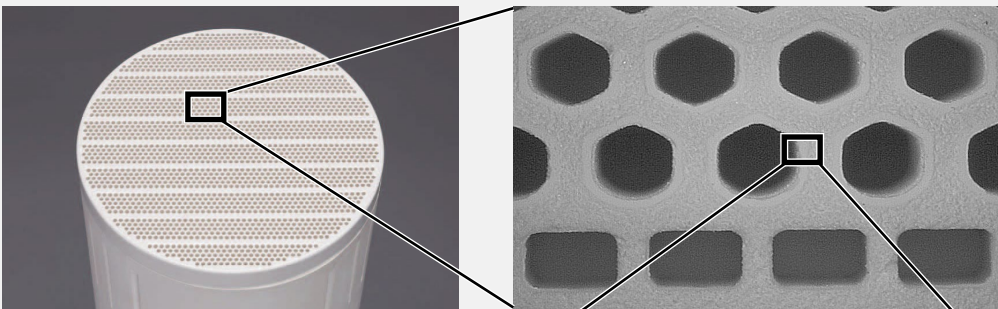
The unique features of the ceramic membrane element allow for the perfect water treatment plant

- **High mechanical strength and resistance to chemicals**  
The ceramic membrane is highly resistant to pressure, heat and corrosion, resulting in no membrane breakage.

- **Long operation life**  
The ceramic membrane element maintains its performance for a long time.

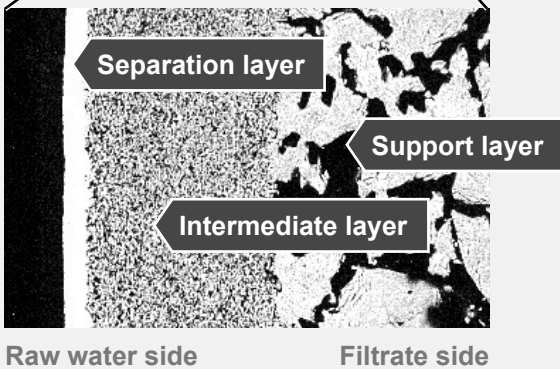
- **Low environmental impact**  
Used membranes can be reused as raw ceramic material.

## CERAMIC MEMBRANE ELEMENT



## MEMBRANE ELEMENT SPECIFICATIONS

Type: Inner pressure monolithic  
Material: Ceramics  
Nominal pore size: 0.1  $\mu\text{m}$   
Outer diameter x Length: 180mm x 1,500mm  
Membrane cell inner diameter: approx.. 2.5mm  
Membrane area: 25m<sup>2</sup>



# NEWLY SMALL SCALE WATER TREATMENT SYSTEM

Package of drinking water treatment plant (DWTP)

## FEATURE OF PACKAGED DWTP

- Fast implementation
- Small footprint
- Low cost
- Unattended operation
- Skidmounted or containerized unit.

